



ON AUCTION

16 SEPT 2025 - ON SITE 11AM

973 HA BUSHVELD FARM

LOCATED BETWEEN GROOT MARICO AND ZEERUST



Contact: AJ Du Plessis

Cell: 073 091 3878

Email: aj@brocor.co.za



CONDITIONS OF SALE

- Have to be registered to participate in auction
- Not subject to finance, however preapproval can be provided.
For finance contact Mortgage Max - Marlucia 083 465 6883
- 10% + VAT deposit payable immediately after the fall of the Hammer
- 90 days to deliver guarantees
- Auctioneers commission 10% + VAT on top of the bid price
- Acceptance period - 14 days after the sale – Seller may confirm on day of the auction.
- Electrical Certificate - seller's responsibility
- All outstanding water and electricity bills for the seller's pocket
- The property is registered in a company that is not a VAT vendor, the sale of property is subject to transfer duty.



General Information

Property Description:	1 BROEKMANSFONTEIN 294 JP Zeerust Outlying 2867 Marico, Ditsobotla, North West
------------------------------	--

Property Type:	Farm portion
-----------------------	--------------

Erf Number:	294
--------------------	-----

Portion Number:	1
------------------------	---

Extent:	4379648 m ²
----------------	------------------------

GPS Coordinates:	-25.66778,26.26836
-------------------------	--------------------



Property Description:	2 BROEKMANSFONTEIN 294 JP Zeerust Outlying 2867 Marico, Ditsobotla, North West
------------------------------	--

Property Type:	Farm portion
-----------------------	--------------

Erf Number:	294
--------------------	-----

Portion Number:	2
------------------------	---

Extent:	691507 m ²
----------------	-----------------------

GPS Coordinates:	-25.6821,26.25379
-------------------------	-------------------



General Information

Property Description:	4 BROEKMANSFONTEIN 294 JP Zeerust Outlying 2867 Marico, Ditsobotla, North West
------------------------------	--

Property Type:	Farm portion
-----------------------	--------------

Erf Number:	294
--------------------	-----

Portion Number:	4
------------------------	---

Extent:	1204013 m ²
----------------	------------------------

GPS Coordinates:	-25.68118,26.27413
-------------------------	--------------------



Property Description:	9 BROEKMANSFONTEIN 294 JP Zeerust Outlying 2867 Marico, Ditsobotla, North West
------------------------------	--

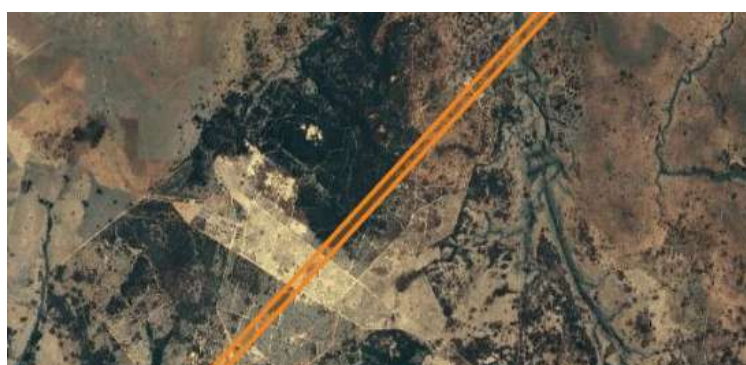
Property Type:	Farm portion
-----------------------	--------------

Erf Number:	294
--------------------	-----

Portion Number:	9
------------------------	---

Extent:	235500 m ²
----------------	-----------------------

GPS Coordinates:	-25.67356,26.27087
-------------------------	--------------------



General Information

Property Description:	10 BROEKMANSFONTEIN 294 JP Zeerust Outlying 2867 Marico, Ditsobotla, North West
------------------------------	---

Property Type:	Farm portion
-----------------------	--------------

Erf Number:	294
--------------------	-----

Portion Number:	10
------------------------	----

Extent:	2305085 m ²
----------------	------------------------

GPS Coordinates:	-25.67928,26.27129
-------------------------	--------------------



Property Description:	294 BROEKMANSFONTEIN 294 JP Zeerust Outlying 2867 Marico, Ditsobotla, North West
------------------------------	--

Property Type:	Farm portion
-----------------------	--------------

Erf Number:	294
--------------------	-----

Portion Number:	0
------------------------	---

Extent:	232350 m ²
----------------	-----------------------

GPS Coordinates:	-25.68113,26.27603
-------------------------	--------------------



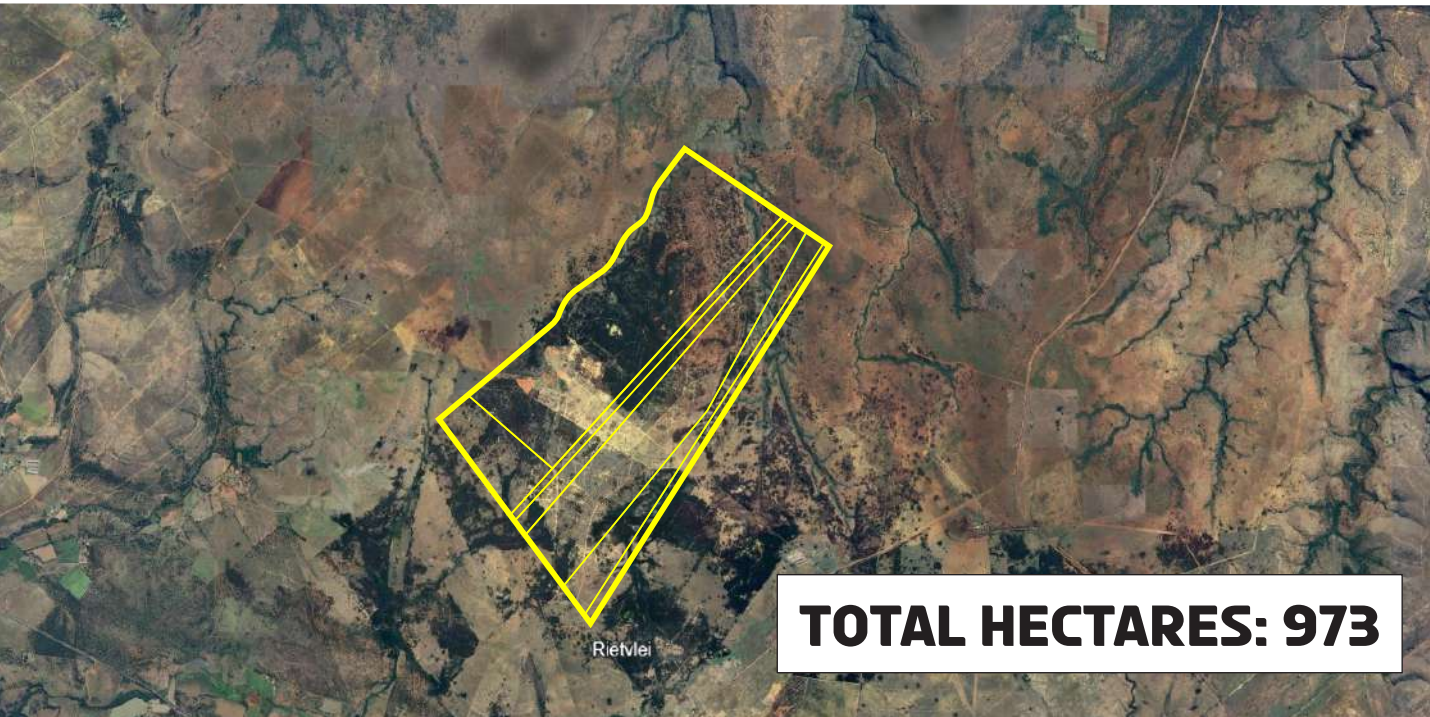
General Information

Property Description:	3 BROEKMANSFONTEIN 294 JP Zeerust Outlying 2867 Marico, Ditsobotla, North West
Property Type:	Farm portion
Erf Number:	294
Portion Number:	3
Extent:	691450 m²
GPS Coordinates:	-25.67656,26.2693



Title Deed Information

Title Deed Number:	T64937/2021
--------------------	-------------



Property Information

This is your chance to own a fully equipped mixed-use farm on 973 hectares, ideally located between Groot Marico and Zeerust. Perfect for country living, business opportunities, or investment potential – this property has it all!

INCLUDED IN THE SALE:

Blackwattle Firewood Business

- In operation for 3.5 years
- Producing an average of 1,200 tons per year
- All machinery and equipment included

New Equipment:

- 3 x Stihl brush cutters
- 1 x Stihl bush cutter
- 1 x Stihl fogger/mist blower
- 16 x Husqvarna backpack sprayers
- 3 x Stihl chemical sprayers
- Ratel heavy-duty brush and tree cutter

Additional Equipment:

- 16 x Stihl M170 chainsaws
- 1,000L diesel cart with pump and meter
- Tractor-mounted grader
- Agpro fire-fighting unit
- JoJo tank with tractor-mounted sprayer/firefighting system
- Petrol-powered cement mixer

Includes all workshop, timber yard, and general farm tools.



PROPERTY FEATURES:

- 3 fenced camps with game fencing
- 5 lion camps ranging from 1 to 3 hectares – ideal for breeding
- Small livestock/feedlot area – capacity for ±400 animals
- 1 seasonal earth dam
- 2 constructed dams, each holding ±120,000 liters
- 3 boreholes (1 solar-powered, 1 electric, 1 unequipped)

GAME INCLUDED:

- 13 Blue wildebeest (Mareetsane bloodline)
- 2 herds of impala – approximately 20 animals each
- 1 herd of kudu cows – approximately 12
- Other wildlife: rib buck, bushbuck, duiker, steenbok, klipspringer, bush pig, and warthog

OUTBUILDINGS:

- PH (Professional Hunter) room
- Storeroom
- Slaughter room
- Cold room
- Game skin storage room

MAIN HOUSE (Fully Furnished):

- 3 Bedrooms
- 3 Bathrooms
- Open-plan lounge with bar
- Spacious farmhouse kitchen with wooden cabinetry

HUNTER'S ACCOMMODATION:

- Sleeps 8 – approximately 80% complete
- Currently used as workers' quarters

WHY YOU'LL LOVE IT:

Breathtaking bushveld views, full operational infrastructure, and business-ready – all bundled into one lifestyle property.

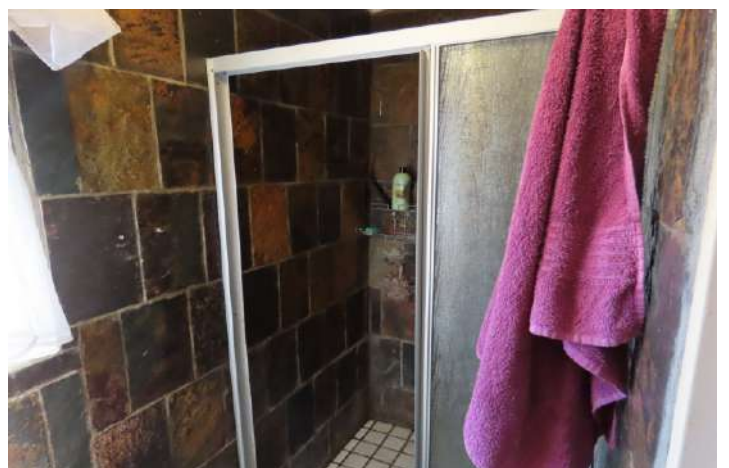
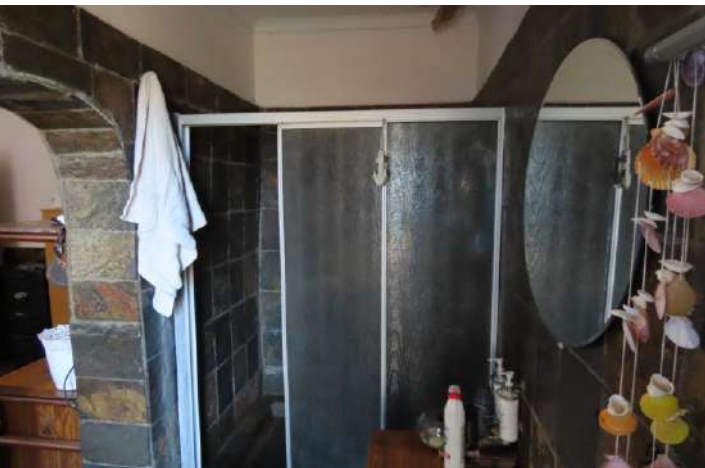
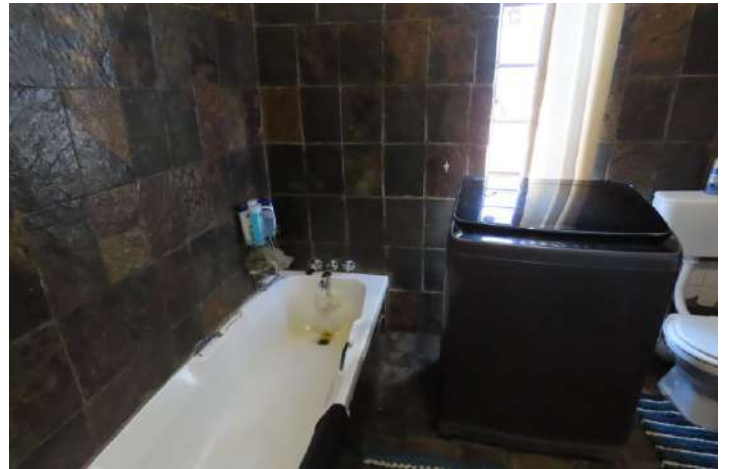


















AUCTION



AJ Du Plessis

Cell: 073 091 3878 | Email: aj@brocor.co.za

WWW.BROCOR.CO.ZA

